



Electronic Locking System
Pegasus Equipments Limited

Pegasus Locks





Professional Manufacturer

Electronic Locking System

Pegasus - The Leader of Stainless Steel Intelligent Locks



01 Pegasus

Pegasus 02

About us

Pegasus Equipments was incorporated in the year 2001 in India, as Pegasus Equipments Pvt. Ltd., and from then on, Pegasus has pioneered in design, development and support of RFID, Biometrics and Locks, focussing on Time Attendance, Access Control, using the advanced technologies.

Pegasus India had grown by leaps and bounds and with a primary objective of providing cost effective solutions and expanding the business profile, our chairman, incorporated Pegasus Equipments (Hong Kong) Ltd in Hong Kong, in the year 2008. as a part of global consolidation, Pegasus Equipments (Hong Kong) Ltd has been renamed as Pegasus Equipments Limited.

Pegasus is an organization built with over 300 man years of work experience in the field of Electronic Security Field.



03 Pegasus

Pegasus 04

A6 Series Intelligent Locks



Mechanical key



Back locking when handle lifted



Open with intelligent card



American standard lock core



05 Pegasus



A6-603

Brushed stainless steel



A6-903

Brushed stainless steel PVD

技术参数 TECHNOLOGY REFERENCE

Dimension of product	锁板 (Lock shell) 286L*75W*23H (mm)
Usage voltage	DC5V, 1.5V "AA" 碱性电池4节 (DC5V, 4 Alkaline Battery)
Power consumption	静态功耗 (Static current) ≤20 μA 动态功耗 (Dynamic current) ≤200mA
Operating environment	工作温度 (Working temperature) : -20°C ~ +60°C 工作湿度 (Working humidity) : 10% ~ 85%RH
Main part material	锁板 (Lock shell) : 不锈钢 SUS304 stainless steel 把手 (Handle) : 不锈钢 SUS304 stainless steel
Card technology	EM 非接触式 (EM card T5557 card/Mifare1 card)

特色功能 FUNCTIONAL CHARACTERISTICS

<p>名家设计, 经304不锈钢锁板及把手, 高品质 SUS304 stainless steel for lock shell and handle, Professional design and high quality</p> <p>把手上翘反锁, 内外手柄分离结构 Back locking when handle lifted, Inner and outer handle "Dissociation" function</p> <p>专利独立式DT双齿轮离合装置, 可靠性更高 Patent detached two-gear clutch device, Good stability</p> <p>智能感应卡及机械钥匙开门方式 Open by intelligent inductive cards or mechanical key</p> <p>美国标准五角锁芯, 加厚锁舌, 坚固耐用 American standard lock core, sturdy and durable</p> <p>极低电压报警功能 Low voltage alarm function</p>
--

Pegasus 06

A8 Series Intelligent Locks



07 Pegasus



机械钥匙
Mechanical key



反锁把手
Back locking when handle lifted



智能卡开门
Open with intelligent card



经美五角通用锁体
American standard lock core



A8-603

Brushed stainless steel



A8-903

经美五角刷PVD
Brushed stainless steel PVD

技术参数 TECHNOLOGY REFERENCE

产品尺寸 Dimension of product	锁板 (Lock shell) 286L*72W*20H (mm)
工作电压 Usage voltage	DC5V, 1.5V "AA" 碱性电池4节 (DC5V, 4 Alkaline Battery)
功耗 Power consumption	静态功耗 (Static current) ≤20 μA 动态功耗 (Dynamic current) ≤200mA
工作温度 Operating environment	工作温度 (Working temperature) : -20°C ~ +60°C 工作湿度 (Working humidity) : 10% ~ 85%RH
主要部件制造材料 Main part material	锁板 (Lock shell) : 不锈钢 SUS304 stainless steel 把手 (Handle) : 不锈钢 SUS304 stainless steel
卡片技术 Card technology	EM 非接触式 (EM card T5557 card/Mifare1 card)

特色功能 FUNCTIONAL CHARACTERISTICS

<p>名家设计, 经304不锈钢锁板及把手, 高品质 SUS304 stainless steel for lock shell and handle, Professional design and high quality</p> <p>把手上翘反锁, 内外手柄分离结构 Back locking when handle lifted, Inner and outer handle "Dissociation" function</p> <p>专利独立式DT双齿轮离合装置, 可靠性更高 Patent detached two-gear clutch device, Good stability</p> <p>智能感应卡及机械钥匙开门方式 Open by intelligent inductive cards or mechanical key</p> <p>美国标准五角锁芯, 加厚锁舌, 坚固耐用 American standard lock core, sturdy and durable</p> <p>极低电压报警功能 Low voltage alarm function</p>
--

Pegasus 08

A3 Serials Intelligent Locks



滑轨式锁芯
Boreitt sliding lock



不锈钢把手
Stainless steel handle



智能卡开锁
Open with intelligent card



标准五角传动锁体
American standard lock core

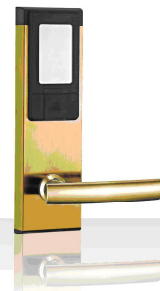


09 Pegasus



A3-603

拉丝不锈钢
Brushed stainless steel



A3-903

拉丝不锈钢PVD
Brushed stainless steel PVD

技术参数 TECHNOLOGY REFERENCE

产品尺寸 Dimension of product	锁板(Lock shell): 260L*76W*20H(mm)
工作电压 Usage voltage	DC5V, 1.5V "AA" 碱性电池4节 (DC5V, 4 Alkaline Battery)
功耗 Power consumption	静态功耗 (Static current) <20 μ A 动态功耗 (Dynamic current) <200mA
工作环境 Operating environment	工作温度 (Working temperature) : -20 $^{\circ}$ C ~ +60 $^{\circ}$ C 工作湿度 (Working humidity) : 10% ~ 85%RH
主要部件制造材料 Main part material	锁板 (Lock shell) : 不锈钢 stainless steel 把手 (Handle) : 不锈钢 stainless steel
卡片技术 Card technology	EM-8/T5557-8/Mifare1卡 (EM card/T5557 card/Mifare1 card)

特色功能 FUNCTIONAL CHARACTERISTICS

外观设计, 专业品质 Professional design and high quality
内外手柄游离合体 Inner and outer handle "Dissociation" function
专利独立式DT双齿轮离合装置, 可靠性更高 Patent detached two-gear clutch device, Good stability
智能感应卡及机械匙双重开锁方式 Open by intelligent inductive cards or mechanical key
美国标准五角锁芯, 加厚锁舌, 坚固耐用 American standard lock core, sturdy and durable
电池低电压报警功能 Low voltage alarm function

Pegasus 10

A2 Serials Intelligent Locks



机械钥匙
Mechanical key



游离合体
Handle Dissociation function



智能卡开锁
Open with intelligent card



标准五角传动锁体
American standard lock core



11 Pegasus



A2-603

拉丝不锈钢
Brushed stainless steel



A2-903

拉丝不锈钢PVD
Brushed stainless steel PVD

技术参数 TECHNOLOGY REFERENCE

产品尺寸 Dimension of product	锁板(Lock shell): 245L*76W*20H(mm)
工作电压 Usage voltage	DC5V, 1.5V "AA" 碱性电池4节 (DC5V, 4 Alkaline Battery)
功耗 Power consumption	静态功耗 (Static current) <20 μ A 动态功耗 (Dynamic current) <200mA
工作环境 Operating environment	工作温度 (Working temperature) : -20 $^{\circ}$ C ~ +60 $^{\circ}$ C 工作湿度 (Working humidity) : 10% ~ 85%RH
主要部件制造材料 Main part material	锁板 (Lock shell) : 不锈钢 stainless steel 把手 (Handle) : 锌合金 Zinc Alloy
卡片技术 Card technology	EM-8/T5557-8/Mifare1卡 (EM card/T5557 card/Mifare1 card)

特色功能 FUNCTIONAL CHARACTERISTICS

外观设计, 专业品质 Professional design and high quality
内外手柄游离合体 Inner and outer handle "Dissociation" function
专利独立式DT双齿轮离合装置, 可靠性更高 Patent detached two-gear clutch device, Good stability
智能感应卡及机械匙双重开锁方式 Open by intelligent inductive cards or mechanical key
美国标准五角锁芯, 加厚锁舌, 坚固耐用 American standard lock core, sturdy and durable
电池低电压报警功能 Low voltage alarm function

Pegasus 12

A1 Serials Intelligent Locks



机械钥匙
Mechanical key



分离把手
Handle Dissociation function



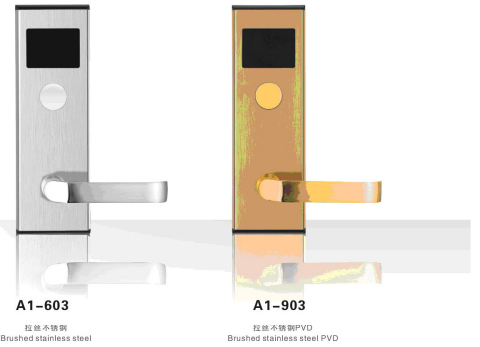
智能卡开启
Open with intelligent card



标准五舌锁芯体
American standard lock core



13 Pegasus



A1-603

拉丝不锈钢
Brushed stainless steel

A1-903

拉丝不锈钢PVD
Brushed stainless steel PVD

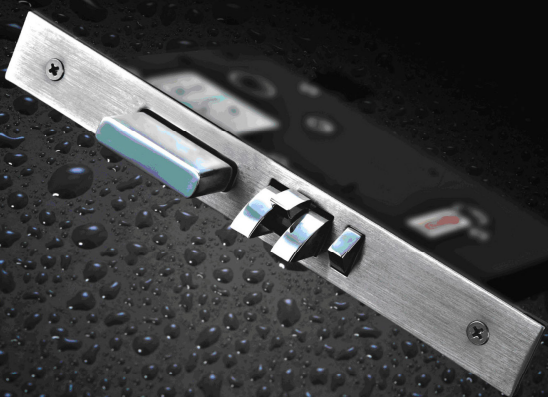
技术参数	TECHNOLOGY REFERENCE	特色功能	FUNCTIONAL CHARACTERISTICS
产品尺寸 Dimension of product	锁体(Lock shell): 245L*76W*20H(mm)	名家设计, 永恒品质 Professional design and high quality	
工作电压 Usage voltage	DC6V, 1.5V "AA" 碱性电池4节 (DC6V, 4 Alkaline Battery)	内外手柄分离设计 Inner and outer handle "Dissociation" function	
功耗 Power consumption	静态功耗 (Static current) $\leq 20 \mu A$ 动态功耗 (Dynamic current) $\leq 200mA$	专利独立式DT双齿轮离合装置, 可靠性更高 Patent detached two-gear clutch device, Good stability	
工作环境 Operating environment	工作温度 (Working temperature): $-20^{\circ}C - 60^{\circ}C$ 工作湿度 (Working humidity): 10% - 85%RH	智能感应卡及机械钥匙双重开启方式 Open by intelligent inductive cards or mechanical key	
主要部件制造材料 Main part material	锁体 (Lock shell): 不锈钢 stainless steel 把手 (Handle): 锌合金 Zinc Alloy	美国标准五舌锁芯, 加厚锁舌, 坚固耐用 American standard lock core, sturdy and durable	
卡片技术 Card technology	EM1875557 * Miare1卡 (EM card 75557 card/Miare1 card)	智能感应卡及机械钥匙双重开启方式 Open by intelligent inductive cards or mechanical key	
		超低电压智能功能 Low voltage alarm function	

Pegasus 14

美国标准电子锁芯 American standard locking core

1. 五锁舌联动结构, 各配件采用加强设计, 更安全, 更稳定。
2. 采用新型专利DT双齿轮离合器, 比传统结构提高寿命五倍以上, 连续工作50万次无故障。
3. 导轨式防撞击设计, 安全可靠。
4. 组合斜舌, 协助轻松开门, 减少震动。
5. 锁芯内置微动开关, 记录各种工作状态信息。
6. 把手反推上反锁功能, 使用更贴心, 更适合指锁等高档电子锁具配套。
7. 美国标准五舌锁体, 采用进口微电机、微动开关, 质量可靠。

1. The accessories used to enhance the design, safer, more stable.
2. Patent detached two-gear clutch device, good stability
3. Rail-type anti-impact tongue design, safe and reliable.
4. Combination latch, easy to open the door to help reduce vibration.
5. Lock core built-in micro switch, record important information for a variety of work.
6. Locked when handle lifted, more suitable for such fingerprint locks.
7. American standard locking core, the use of imported micro motor, micro switch, reliable quality.



15 Pegasus

According to different application of electronics door locks, Pegasus intelligent locks are divided into hotel locks and home locks. Hotel locks are operated through the use of lock integrated management software, which mainly used in hotels, clubs and other places controlled by management software, with standalone chips. Home Locks are independent to ensure every lock's safety and privacy after locks installation on the doors. They are mainly used in home, villa, apartment, office and other private places.



Product Application

- 安全保障 Security**
 - 防插报警功能: 门未关好自动声光报警提醒;
Anti-plug alarm: If door is closed improperly, alarm will work automatically;
 - 应急启动功能: 智能卡及机械钥匙两种开启方式, 确保酒店在任何紧急情况下均可开门锁。
Emergency: two options (via intelligent card and normal key) to open a door so that a door can be opened under emergent circumstances;
 - 遗失追踪功能: 如有卡片不慎丢失, 可通过酒店管理软件对遗失的卡片进行追踪, 加强酒店的安全管理。
Deregister function: If accidentally a card is lost, it will be written off through the hotel management software, which enhance the security of hotel management;
- 完善的安全管理系统 Comprehensive system of safety management.**
 - 开锁记录功能: 可查询任何时间以任何方式的开锁记录;
Unlock records: lock records can be checked at any time and in any way;
 - 级别卡管理: 可分总卡、客人卡、磁卡、磁条卡、清洁卡等五个管理级别到十几类卡片类型, 以满足酒店全方位的等级管理需要;
Card classification management: all cards can be divided into 5 types: master cards, guest cards, building card, Floor cards, and cleaning cards, these five management-level cards are classified to meet the full range of hotel management;
- 人性化 User Friendly.**
 - 数据自动备份功能: 通过管理软件中建立的维护计划, 自动在后台备份数据;
Data Backup Function: In the software maintenance plan, all data and information will be back-uped automatically.
 - 请勿打扰功能: 客人入住后应能方便打开, 门锁红灯闪烁, 代表“请勿打扰”;
No Disturbing function: After entering the room, turn on the deadbolt, the red light on the lock flashes, which means "No Disturbing";
- 隐私性 Privacy:** 门锁出厂时为空白信息, 在用户装好门锁后需要直接在门锁上对将使用的卡片进行登记授权后方可开启门锁。
Privacy: all door locks have no information records from factory, user is required to authorize on the card after installing locks on the door directly.
- 安全性 Security:** 带出门反推把手上锁功能, 确保门锁上锁后的安全性。如有卡片丢失, 主人可对相应门锁上的卡片进行删除。
Security: anti-lock function automatically to ensure the security of door. If card is lost, the owner can delete lock data on its card.
- 人性化 User Friendly:** 分门别类卡及普通开门卡, 门锁反锁后普通开门卡不能开启。
User Friendly: there are master cards and general card, but general card can not open the door after door is locked inside.

Pegasus 16

pegasusTM



17 Pegasus

Pegasus 18

pegasusTM

Security @ your fingertipsTM

www.pegasus.hk

www.pegasusequipments.com

Pegasus Equipments Limited

China Office:

#1802 B, Shandong Building, Nanhai Street, Nanshan District, Shenzhen China, 518054

TEL: +86-755-26417573 FAX: +86-755-26417345